

**POLETECTOR**<sup>360</sup> Installation Instructions  
*we cover all your bases!*<sup>™</sup>

**SPECIAL NOTES:**

- Installation of the Poletector 360 does not require tools.
- If the concrete pole base is located in the soil, level the ground three inches out from the base before installation.
- If the concrete pole base is located on a hard pavement that is not level, the installation of the foam that comes with the Poletector will help level the Poletector.
- For removal use a flathead screwdriver to pry buckles and remove tough locks.

**STEP 1:**

- Check to see if all parts are included.

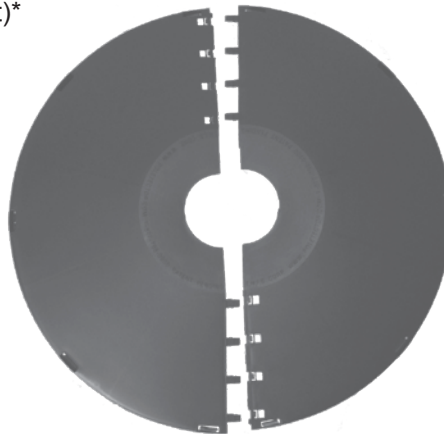
**Please call 877-798-0900 if you do not have the correct number of parts.**

**CONTENTS:**

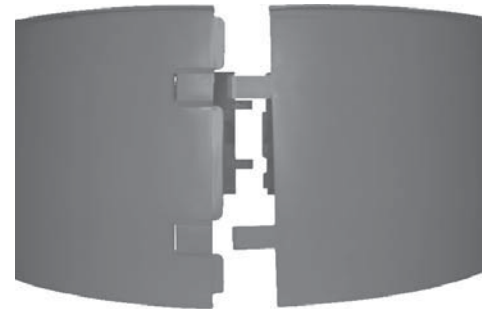
- Top (in two halves)
- Poletector Rings (2 half rings in set)\*
- 2"x2"x80" foam pieces\*

Plastic bag containing:  
- 2 Double Tough-Lock Clips  
- 6 Single Tough-Lock Clips

\* You should receive the same quantity of foam pieces as quantity of ring sets.



Top (in two halves)



Poletector Rings (2 half rings in set)

Plastic bag containing:



2 Double Tough-Lock Clips



6 Single Tough-Lock Clips



2"x2"x80" pieces of foam



T.H.IS. CORP  
PO BOX 161  
SOUTH LYON, MI 48178  
PH: 877.798.0900 FAX: 877.798.0900  
WWW.POLETECTOR.COM INFO@POLETECTOR.COM

## STEP 2:

VERIFY THAT THE GROUND AROUND THE CEMENT BASE IS LEVEL

- If the concrete pole base is located in the soil, level the ground three inches out from the base before installation.
- If the concrete pole base is located on a hard pavement that is not level, the installation of the foam that comes with the Poletector will help level the Poletector.



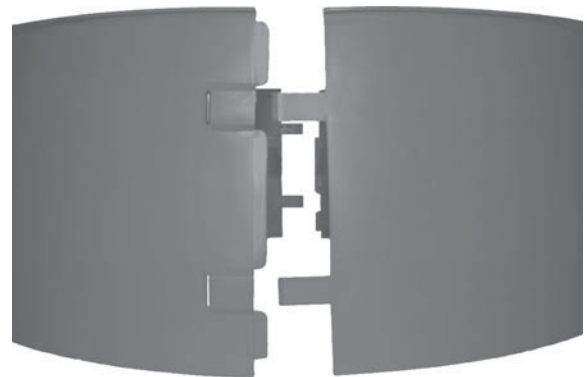
Level the ground around the base

## STEP 3:

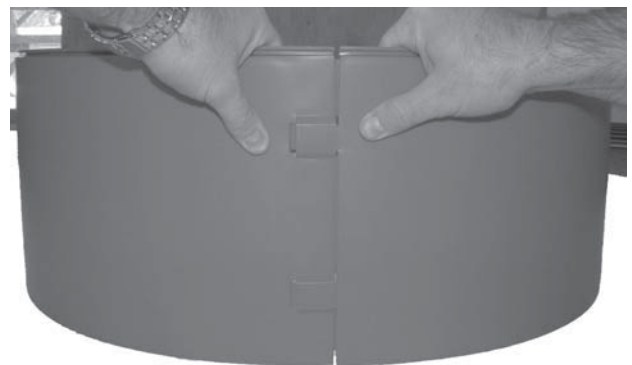
FITTING THE POLETECTOR RINGS

- Locate your set of Poletector Rings.
- Fit together the male tabs into the female buckles on **ONE SIDE ONLY**.
- Use **FIRM** thumb pressure at the buckle side to make sure the tabs are firmly buckled.

Note: if you purchase logos, determine where you would like them to appear and plan your ring layout accordingly.



Buckle ONE SIDE ONLY



Use FIRM thumb pressure to buckle

(STEP 3 continued on next page)

**STEP 3:** (continued)

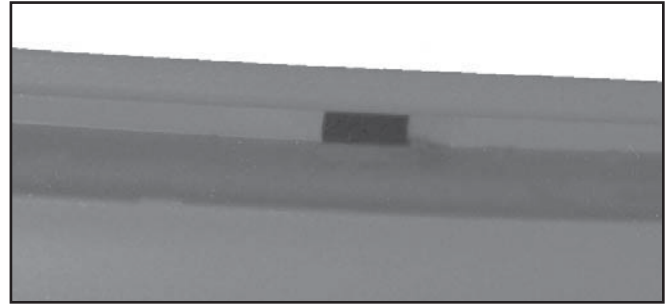
**INSTALL THE FIRST POLETECTOR RING**

- Place ring around POLE (not the concrete) before you begin the process of snapping the ring closed.
- Make sure that the FEMALE (grooved side of the ring) is facing UPWARDS towards the top of the light pole.
- Use **FIRM** thumb pressure at the buckle side to snap the ring together.
- Let the ring drop to the bottom of the concrete base.
- Check that the bottom ring (first ring) is sitting fairly level. Uneven ground can make installation difficult, and decrease the attractive fit of the product.
- Install one of the 2"x2"x80" foam pieces between the ring and the concrete base.

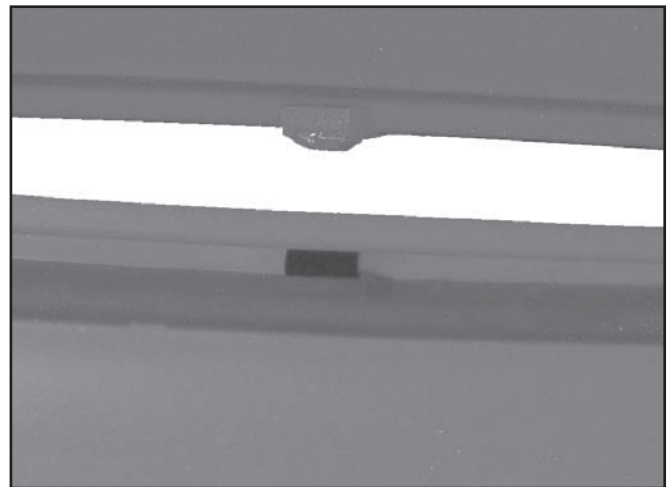
**INSTALL THE REMAINING RINGS**

- Repeat the above process for the second ring.
- Once the second ring is dropped down onto the first ring, start at the HORIZONTAL ALIGNMENT POINTS ( 3 notches visible on the bottom of the rings) and push MALE edge into the FEMALE groove. Work the horizontal seams together. Go to the other side, and repeat the process.
- Repeat this process for the remaining rings.

**\*\* For best fit start with center alignment point. This step is very important for appearance, structural integrity, and aligning logos.**



Female (grooved side) faces upward



Horizontal alignment point, note the notches



Work the horizontal seams together

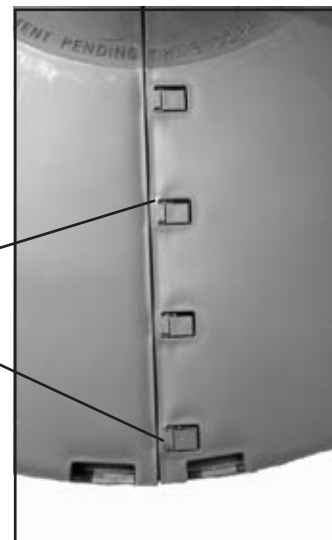
**Note:** For customers using logos with square light poles, be sure your logo is facing the desired direction BEFORE placing the top. Make sure your top seams match your side seams. Once the top is clipped, it CANNOT be turned on a square light pole without removing top.

## STEP 4:

### ATTACHING THE TOP

- Align the two top halves around the pole and rest on the top of the rings.

Snap two top halves together. Start with one side then move to the opposite side.



### INSTALLING TOUGH-LOCK CLIPS AT TOP SEAM

- Install a Double Tough-Lock Clip at the top seam.
- Repeat on the opposite side.
- Install Single Tough-Lock Clips into the six remaining holes.



Double Tough-Lock Clip



Single Tough-Lock Clip



## FINAL STEPS:

- Check that all Rings fit together tightly.
- Check that all Clips are pushed in tightly.